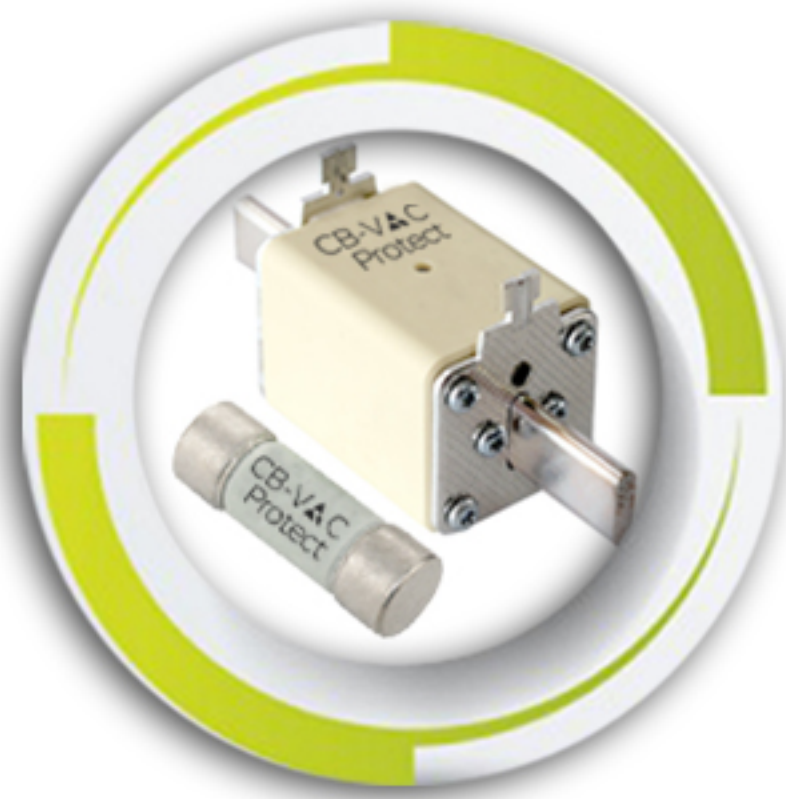




CB-VAC Protect

RELIABLE PROTECTION FOR SOLAR PV SYSTEMS



Key Specifications

⚡ Voltage Range 600Vdc / 1000Vdc / 1500Vdc	⚡ Current Range 1A – 630A
☐ Breaking Capacity Up to 50kA	✓ Standards IEC 60269-6, UL 4248-19
⚙️ Operating Class gPV, UL PV fuses	☐ Ambient Temperature Up to 120°C

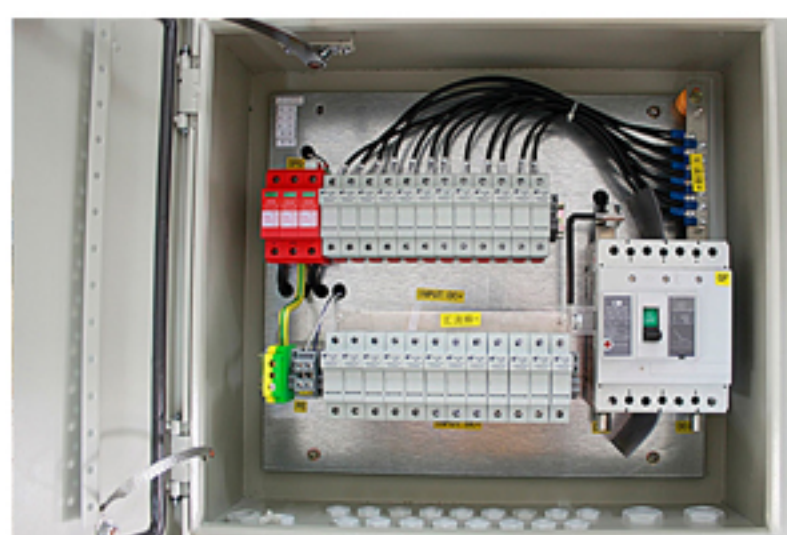
Why Choose Our PV Fuses

- ✓ **High Reliability:** Pure silver fuse element, low power loss
- ✓ **Global Compliance:** UL & IEC approvals for worldwide acceptance
- ✓ **Flexibility:** Multiple sizes, holders, and installation options
- ✓ **Proven Performance:** Withstands harsh temperature cycling & DC fault currents

Product Applications



PV STRING PROTECTION



COMBINER BOXES



INVERTERS



BATTERY PACKS / STORAGE SYSTEMS



DC DISCONNECT SWITCHGEAR

